



**BANGLADESH
MEDICAL
AND HEALTHCARE
VIRTUAL
EXPO 2021
21-24 JUNE**
Incorporating Business Matching Week

Organised By

Hosted On

WORLDDEX 
Exhibition & Promotion Pvt. Ltd.

GATEWAY TO GLOBAL TRADE

Bee2Bee 

www.bee2bee.asia



5

Participating Countries



2268

Unique Visitors Attended



75

Participating Exhibitors



307

One-to-One Business Matching Meetings

After the success of Sri Lanka Medical & Equipment Virtual Expo (SLMEVE) which was held on 16-19 March 2021, we are pleased to invite you to exhibit your company's smart, innovative and quality medical and healthcare products at the **Bangladesh Medical & Healthcare Virtual Expo – Incorporating Business Matching Week from 21-24 June, 2021** to enhance your brand's visibility, interact with industry buyers and grow your business in Bangladesh.



Exhibitor Testimonials

Shiro Ueda, Medical Edge, Japan

The Pre-fixed B2B meetings arranged were very good at the show. It was a good opportunity to showcase the products online during these pandemic times. Overall, we are satisfied with the platform.

Linlith Herman Pinto, Biometric Cables, India

The business to business matching meetings were positive and we were pleased with the number of meetings arranged with prospective buyers for us.

Buyer Testimonials

Akram Dowd, Premier Healthcare Pvt Ltd, Sri Lanka

We found the show very good in terms of variety of products and appreciate the face to face meetings as they are leading to potential deals with exhibitors.

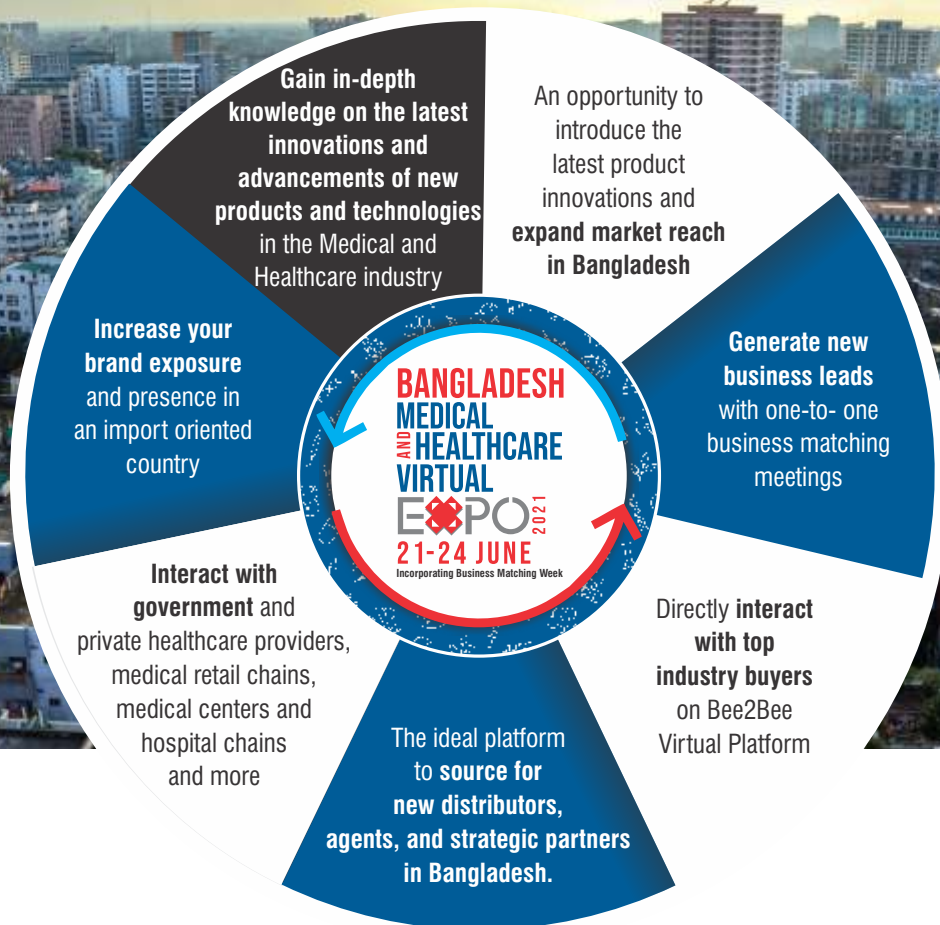
Christopher Scherbaum, Corscience GmbH & Co. KG, Germany

The platform was very user friendly with detailed information making it easy for us to arrange meetings with the most relevant suppliers. I was impressed with the quality of the exhibitors and ease with which multiple meetings had been organized.

Dr. Ramanan, Ratnam Private Hospital Ltd, Sri Lanka

The business matching was so well organized. I look forward to doing business with the most of the suppliers of different medical products with whom I interacted on this virtual platform.

Why Exhibit?



Why Bangladesh?



According to Lightcastle Partners Bangladesh Business Confidence Index, Healthcare is touted as one of the most promising sectors and **healthcare spending is expected to grow** to USD 11.1bn by 2024 from USD7.4bn in 2019.



Healthcare sector was **given the highest priority owing to the current pandemic situation** and post pandemic times with 23.44% additional allocation (as compared to last fiscal year) and incentives were announced by the Bangladesh government.



Bangladesh's medical devices and equipments market is expected to achieve one of the fastest growth rates in the world in the next 5 years. **The size of Bangladesh's medical device market in 2020 was TK 200 billion.**



The medical equipment **industry in Bangladesh is highly import-oriented**. 85% of the medical supplies are imported from the USA, India, China, South Korea and the European countries.

Exhibiting Countries

India	Bangladesh	Pakistan	China	Hong Kong	Singapore	Thailand	Taiwan	Indonesia	Korea
Vietnam	Malaysia	Turkey	UK	Germany	Netherlands	France	Italy	Spain	Australia

and more...

Exhibit Profile

- Hygiene and Sanitary
- Personal Protective Equipment (PPE)
- Diagnostic Supplies
- Disinfectant Supplies
- Disposables
- First Aid and Care Products
- Healthcare & Wellbeing
- Home Medical Equipment
- Hospital & Clinical Equipment & Furniture
- Imaging & Diagnostics
- IT Systems & Solutions
- Laboratory Equipment & Supplies
- Medical Equipment & Devices
- Pharmacy and Dispensary
- Supplies & Furniture
- Preventive & Post-Diagnostic Treatment
- Smart Medical Products
- Surgical Instruments
- Testing Instruments & Supplies
- Wireless Health & Mobile Health
- Herbal Supplies
- Beauty & Wellness
- Certification Bodies
- Health Tourism
- Wellness Hotels-Resorts

www.worldexindia.com/medhealthexpos



Buyers Profile



Hospitals and Medical Institutions



Clinics and Laboratories



Medical Device Distributors and Agents



E-commerce and E-tailers



Government Agencies and Associations



Importers



Hospitality, Hotels, Restaurants and Resorts



Investment Companies



Pharmacies



Universities and Research Institutions



Medical Device, R&D Institutions and Manufacturers

and many more

Follow us on:    

Organised By



Exhibition & Promotion Pvt. Ltd.

GATEWAY TO GLOBAL TRADE

Worldex India Exhibition & Promotion Pvt. Ltd.

Mumbai: 309, Parvati Premises, Sun Mill Complex, Lower Parel (W), Mumbai-400 013.

Tel.: + 91-22 4037 6700 | Fax: +91-22 2496 2297

Delhi: F-10, First Floor, Kalkaji, New Delhi-110 019. Tel.: +91-11-4180 2118-19 | Fax: +91-11-2628 5142

E-mail: contactus@worldexindia.com

Industry Partners



MEDICAL NEEDS



Haider Mirza + 91 9619095955
haider@worldexindia.com

Risha Rajput + 91 9769478409
risha@worldexindia.com

Laxmi Shrinivas + 91 9137485454
laxmi@worldexindia.com

Sumeet Jaokar + 91 9987794867
sumeet@worldexindia.com

For participation contact